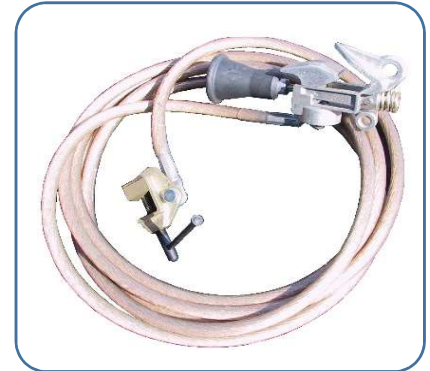


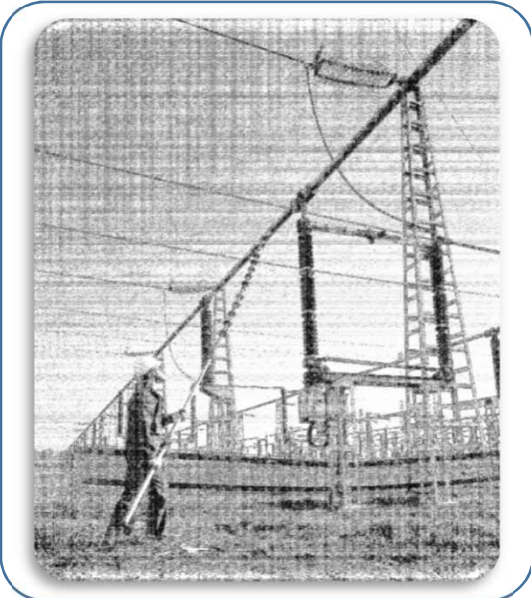
Temporary Earthing Device (TED)

Application:

Earthing and short-circuiting devices are portable equipment for temporary earthing or earthing and short-circuiting of disconnected or isolated switchgear installations. The aim of earthing and short-circuiting of disconnected or isolated parts in electrical installations is to prevent voltages and electric arcs in the event of an accidental re-closure or when currents are coupled into the system by adjacent energised installations.



Structure Outline:



Each Device has:

1. Three Pieces of Line Clamp
2. Transparent Sheathed Flexible Copper Wire
3. Earth Clamp
4. Enclosure Box
5. Composite Tube Stick
6. Earth Clamp
7. Earth Connection Point
8. Applicator Head (for removable stick)

Specification:

PETUNIA Co. has been designing and developing portable earthing and short-circuiting equipment for more than 25 years. We offer an extensive range of reliable equipment, adaptable to numerous types of Temporary Earthing Devices for fault currents to 31.5 kA - 0.5 s

Order Code	Max. Voltage (KV)	Max. Short Current (KA/S)	Cable		Clamp Type	Stick Length (m)
			Size (mm ²)	Length (mm)		
TED a1 33/10	33	10	35	5	S 5-60	2
TED a2 33/10	33	10	35	5	S 20-120	2
TED b1 63/20	33	1	95	7	S 5-60	4
TED b2 63/20	63	20	95	7	S 20-120	4
TED c1 63/20	63	20	95	10	S 5-60	4
TED c2 63/20	63	20	95	10	S 20-120	4
TED b1 132/31.5	63	20	95	7	S 5-60	4
TED b2 132/31.5	132	32	95	7	S 20-120	4
TED c1 132/31.5	132	32	95	10	S 5-60	4
TED c2 132/31.5	132	32	95	10	S 20-120	4
TED d1 230/40	132	32	120	10	S 5-60	5
TED d2 230/40	230	40	120	10	S 20-120	5
TED d3 230/40	230	40	120	10	120-200	5
TED e1 400/50	230	40	150	12	S 5-60	6
TED e2 400/50	400	50	150	12	S 20-120	6
TED e3 400/50	400	50	150	12	S 120-200	6

Titel:	Document No.:					
Temporary Earthing Device (TED)	Rev.:	0	Issued For Approval	97/10/20	K. J.	M.R.Hedayati
	Page:	1/2	Description	Date	Prepared	Checked
						Approved